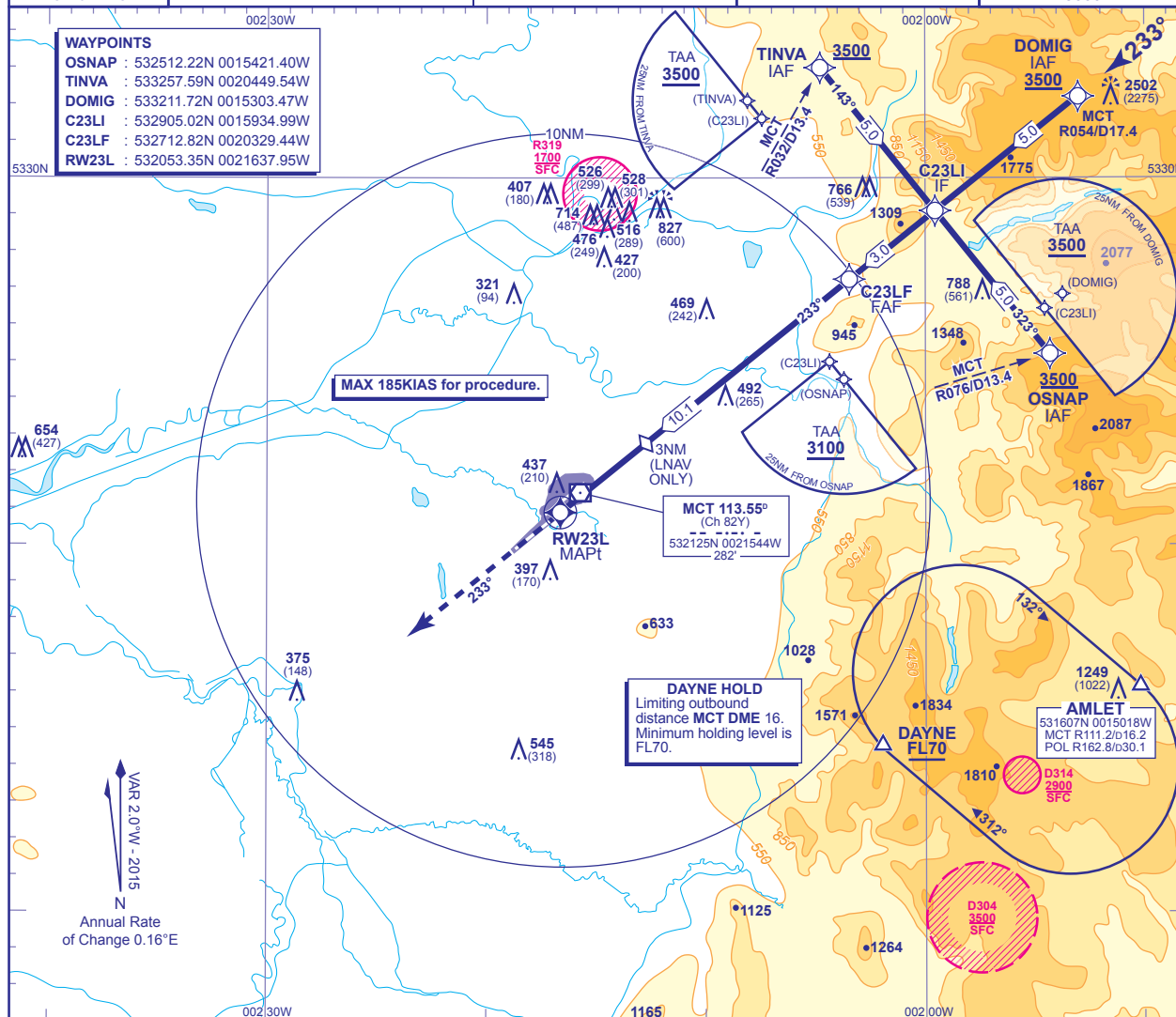


INSTRUMENT APPROACH CHART - ICAO

MANCHESTER

RNAV(GNSS)
RWY 23L
(ACFT CAT A,B,C,D)

<div style="border: 1px solid black; border-radius: 50%; width: 40px; height: 40px; display: flex; align-items: center; justify-content: center; margin: 0 auto;">35</div> <div style="text-align: center; margin-top: 5px;">MSA 25NM MCT</div>	APP	118.575, 135.000	MANCHESTER RADAR	AD ELEVATION	257
		121.350	MANCHESTER DIRECTOR	THR ELEVATION	227
	TWR	118.625, 119.400	MANCHESTER TOWER	OBSTACLE ELEVATION	2502 AMSL (2275) (ABOVE THR)
		121.850, 121.700	MANCHESTER GROUND	BEARINGS ARE MAGNETIC	
	ARRIVAL ATIS	128.175	MANCHESTER INFORMATION		
					MIN TEMP -15°C TRANSITION ALTITUDE 5000



RECOMMENDED PROFILE VNAV VERTICAL PATH ANGLE 3.0°, 318FT/NM. LNAV Gradient 5.2%, 320FT/NM

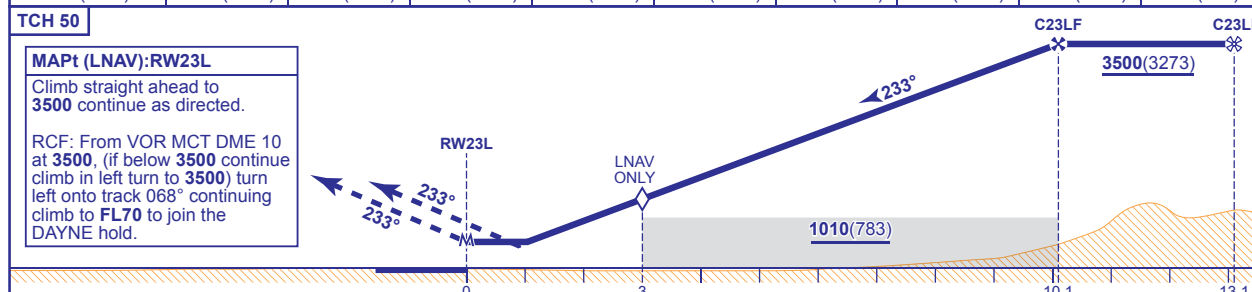
NM to RW23L	10	9	8	7	6	5	4	3(LNAV SDF)	2
ALT(HGT)	3460(3233)	3140(2913)	2820(2593)	2510(2283)	2190(1963)	1870(1643)	1550(1323)	1230(1003)	910(683)

TCH 50

MAPt (LNAV):RW23L

Climb straight ahead to 3500 continue as directed.

RCF: From VOR MCT DME 10 at 3500, (if below 3500) continue climb in left turn to 3500) turn left onto track 068° continuing climb to FL70 to join the DAYNE hold.



Aircraft Category	A	B	C	D	Rate of descent	G/S KT	160	140	120	100	80
OCA (OCH)	LNAV/VNAV	680(453)	680(453)	680(453)	680(453)	FT/MIN	850	740	640	530	420
	LNAV	680(453)	680(453)	680(453)	680(453)						
VM(C)OCA (OCH AAL)	Total Area	750(493)	820(563)	1110(853)	1110(853)						

NOTE 1 Pilots should 'Request RNAV Approach' on first contact with Manchester Radar.

CHANGE (4/16): MAG VAR. OBSTACLES. AMLET FIX.

AERO INFO DATE 19 JAN 16